

**ALBATROZ  
ENGENHARIA**

# TRAX 300

360° laser  
overlook



**multi-platform system  
(UAV and ground)**



**real time information**



**customized software**



**GPS**



**inertial data**



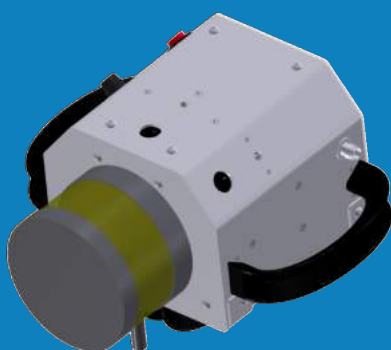
**visual cameras**



**IR cameras**



**wi-fi**



The TRAX 300 is a multi-platform mission equipment that can provide LIDAR scanning digital output, visible and infrared images, inertial data and GPS location. The software running on the equipment can be optimized according to the customer needs, operation requirements and platform. During the equipment operation, the operator can easily access to sensors information in real time through a computer or tablet.

# TRAX 300

360° laser  
overlook

## SPECIFICATIONS

### Laser specifications

Laser eye safety	Class 1
Accuracy	3 cm
Scan speed	~300 000 points/sec.

### Camera specifications

Visible	up to 3 cameras of 5 Mpx
IR	spectral range 8-13 $\mu$ m

### GPS/Inertia

GPS	1 antenna
Accuracy	0.5m - 1m

### Power and protection

Power requirements	12-24V DC, <35W
--------------------	-----------------

### Overview

Equipment size	210 mm (H) x 122 mm(L) x 154 mm(W)
Equipment weight	2.8 kg
Out put data	Ethernet and wi-fi



human vest application



ground vehicle installation



UAV installation



real time information



recorded detailed information

